

PCORnet[®]: An Introduction



PCORnet[®] is intended to improve the nation's capacity to efficiently conduct patient-centered health research, particularly comparative clinical effectiveness research (CER), by providing a large, highly representative network of health data, research expertise, and patient insights. PCORnet has been developed with funding from the Patient-Centered Outcomes Research Institute[®] (PCORI[®]).

Updated
February 2026

United Data and Communities for Faster, More Targeted Research

One PCORnet® — Many Possibilities

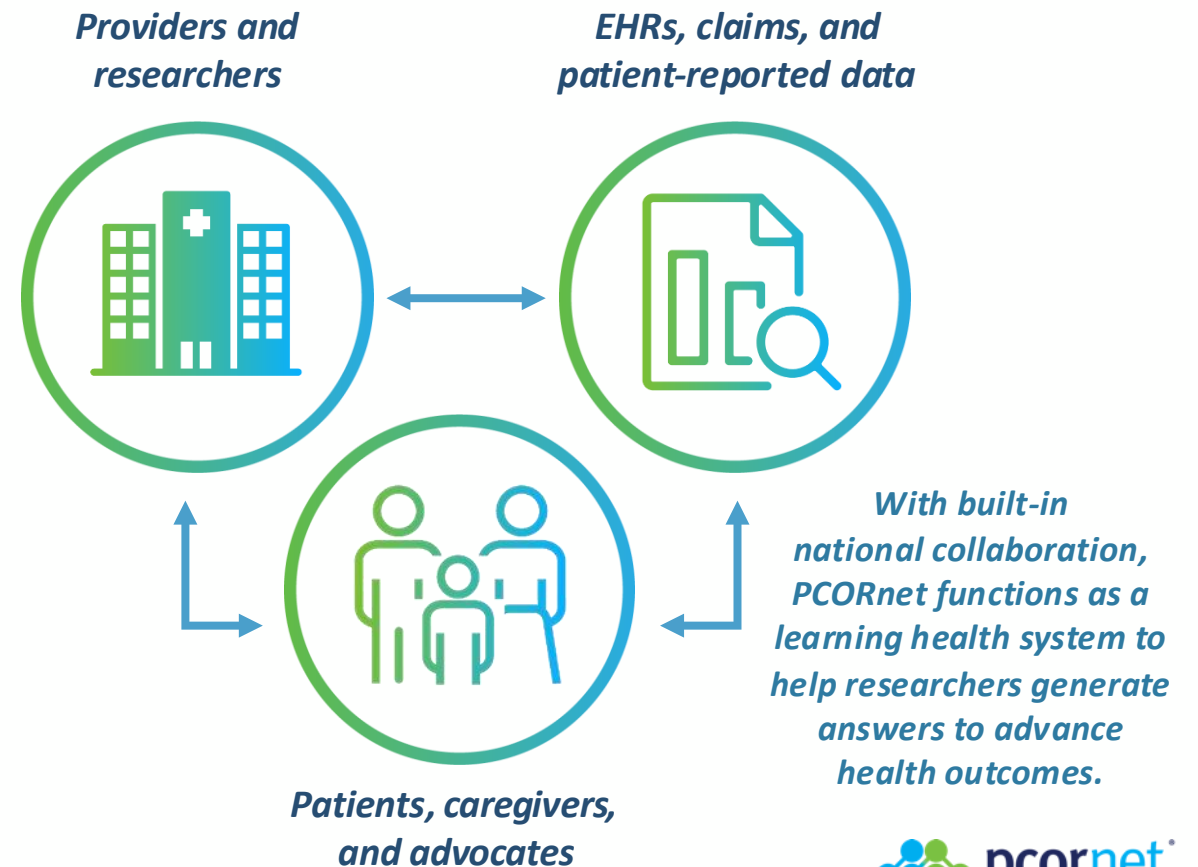
PCORnet is a national resource, funded by PCORI, that enables insights from high-quality health data, patient partnership, and research expertise to deliver fast, trustworthy answers that advance health outcomes.

Research Powered by PCORnet®

- Real-world evidence studies
- Comparative clinical effectiveness research
- Population health research
- Pragmatic research
- Health systems research
- Implementation science research
- And more

More Than a Data Network

Access to patient partners and thousands of clinicians with expert knowledge of PCORnet-enabled data = meaningful research targets and faster answers.



A Vetted National Resource

50

States

PCORnet is linked to patients in every state in the U.S.

47

Million People

PCORnet represents data from everyday healthcare encounters with >47 million people annually across the U.S.

60

PCORnet[®] Studies

Funded by

PCORI
34 (57%)

Federal
16 (27%)

Industry
10 (17%)

78

PCORnet[®] Network Partners

8 PCORnet[®] Clinical Research Networks across the U.S.

1,041

Publications

Supported by PCORnet resources

\$695

Million

PCORnet[®] Studies funding by source

PCORI
\$325M
(47%)

Federal
\$319M
(46%)

Industry \$51M (7%)

Over the last 10 years, PCORnet[®] Studies have already answered critical patient-centered questions on **heart disease, metabolic conditions, obesity,** and more, demonstrating the power of PCORnet to improve patient care through efficient, high-quality research.

Research that leverages this network is tapping into a **proven engine for discovery.**

Data as of December 2025

PCORnet® Playbook

Your guide to using PCORnet for patient-centered research

Through this resource, you will learn:



How to use PCORnet resources to find fast, trustworthy answers to patient-centered health research questions.



How to design high-quality, large-scale research projects using PCORnet services, including engagement, data, and outreach support.



What to expect when collaborating with PCORnet® Network Partners.

Get started at pcornet.org/pcornet-playbook

PCORnet® Playbook

MODULE 2: GETTING
STARTED WITH PCORnet

LAST UPDATED JUNE 3, 2025



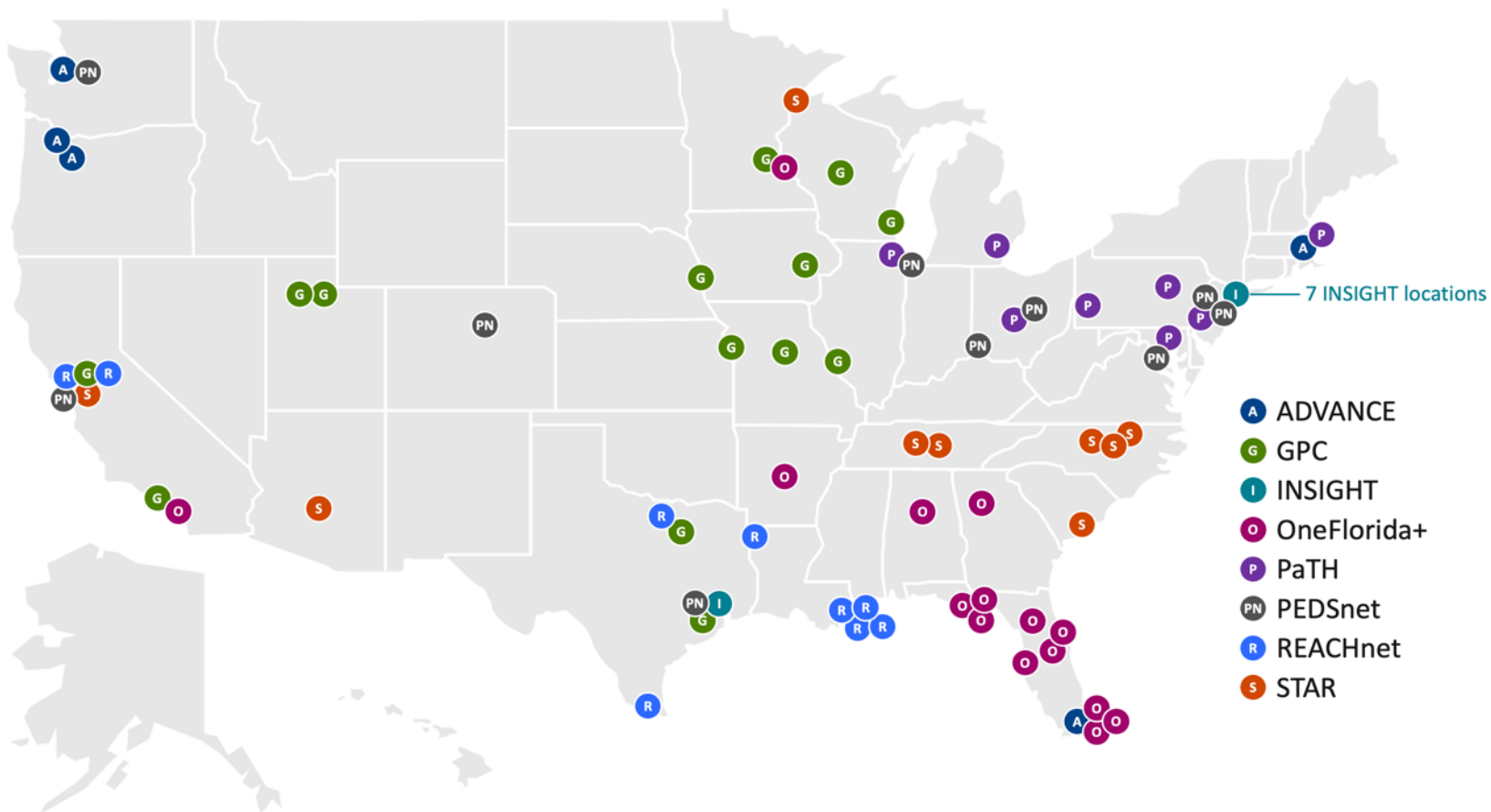
Data Insights via PCORnet[®]



pcornet[®]

The National Patient-Centered Clinical Research Network

PCORnet[®] Clinical Research Network Locations

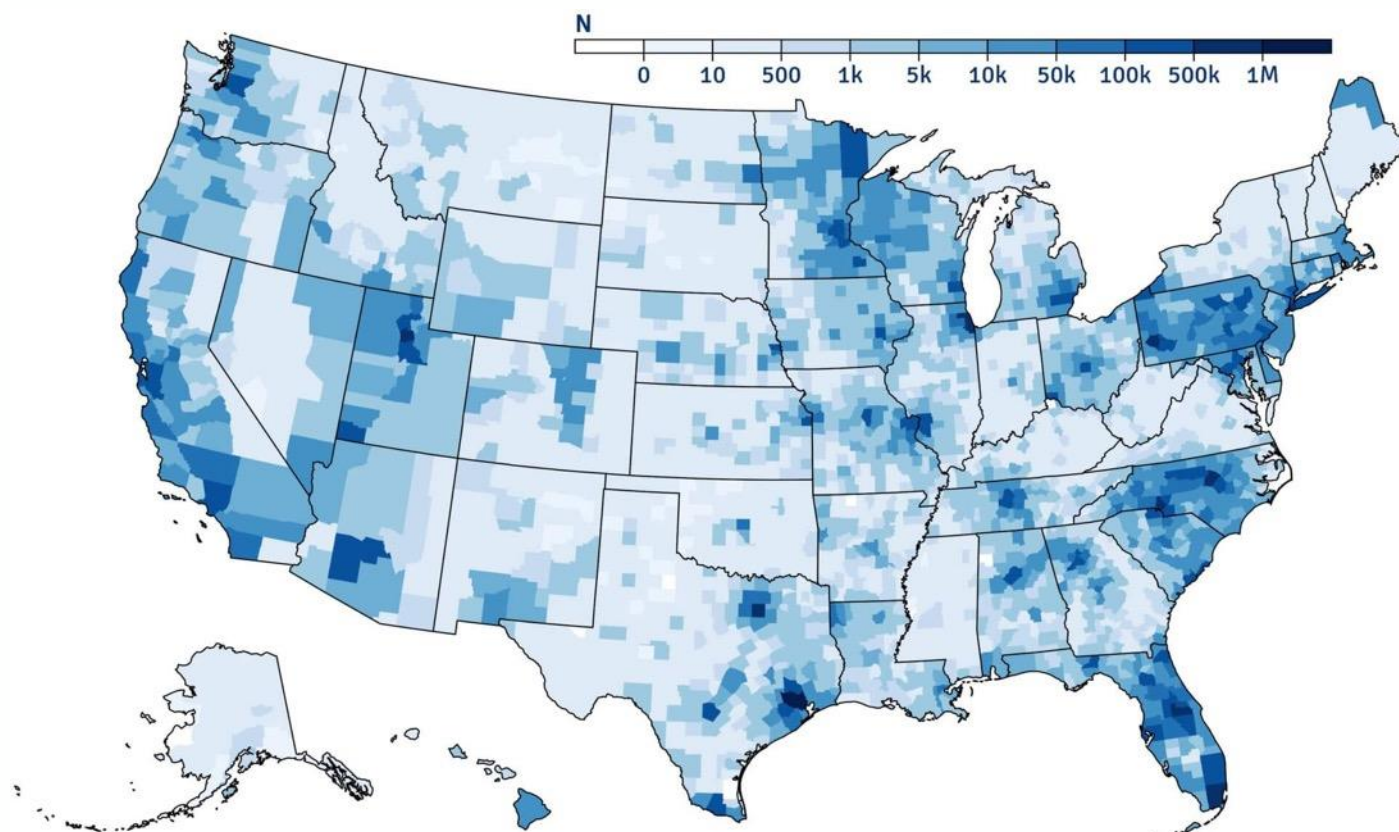


What are Clinical Research Networks?

- Healthcare institutions from large academic health centers to local community clinics across the U.S.
- Committed to speed patient-centered research via PCORnet

Scope of PCORnet-Accessible Data

PCORnet represents data from **everyday health care encounters with more than 47 million people** annually across the U.S., enabling large-scale, innovative, patient-centered health research.



**The data density map illustrates single addresses that are associated with individual PCORnet® Network Partner encounters.*

The PCORnet[®] Common Data Model

To be useful, data have to be standardized across systems. Frequent data curation and a single language enabled by the PCORnet[®] Common Data Model (CDM) deliver fast insights.

Ready for Research

Available, But Still Evolving

Demographics	Diagnoses	Procedures	Immunizations	Tumor Registry	Biosamples
Vital Signs	Labs	Clinical Observations	Social Determinants of Health	Patient-Generated Data	Genomic Results
Medication Orders & Administrations			Patient-Reported Outcomes	Natural Language Processing Derived Concepts	

Data from PCORnet[®] Clinical Research Networks available in the PCORnet[®] CDM and ready for use in research

Data available at some PCORnet[®] Clinical Research Networks that may not be in the PCORnet[®] CDM and require additional work for use in research

Community Engagement via PCORnet[®]



pcornet[®]

The National Patient-Centered Clinical Research Network

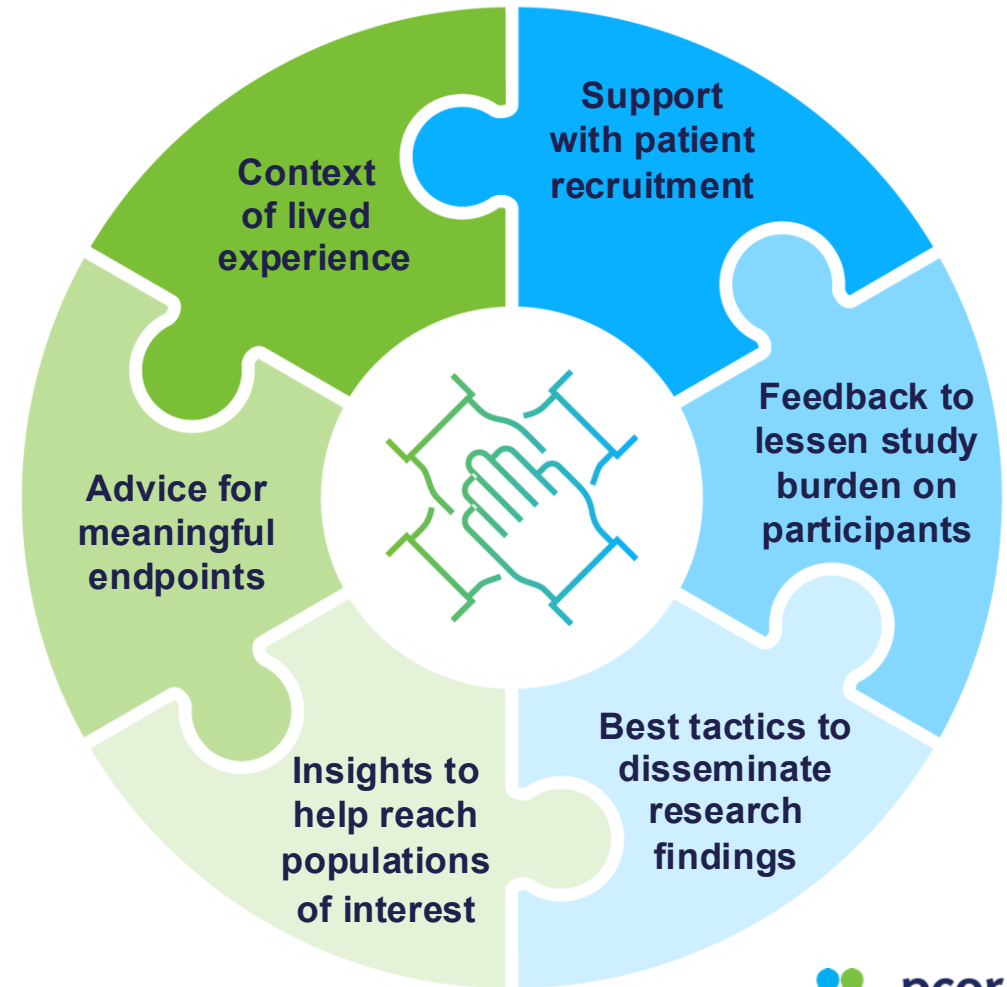
Engaged Communities Drive Better, Faster Research

What do we mean by “communities”?

- Patients and caregivers, engaging as coequal collaborators with health professionals
- Clinicians/Clinic Staff
- Insurers
- Policymakers
- Others

“Good studies consider all relevant evidence — and no evidence is more relevant than the community experience.”

— PCORnet® Steering Committee Member



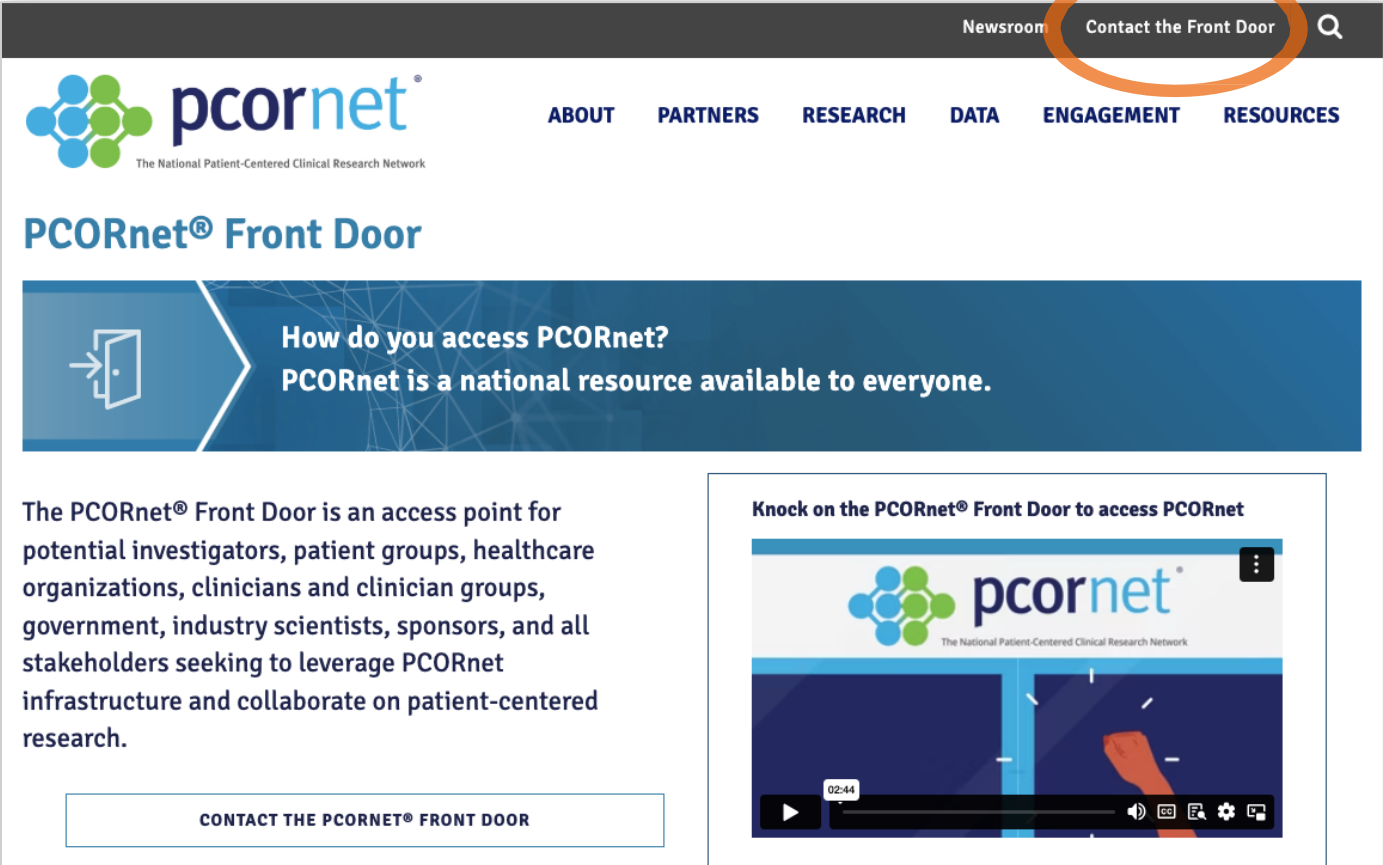
PCORnet Compared with Other Research Networks

The PCORnet infrastructure brings a full spectrum of capabilities, plus connection to communities.

	Feasibility queries	Identification of patient populations for trial recruitment	Coordinated data curation	Connection to patients and providers
PCORnet	●	●	●	●
ENACT	●	■	■	■
TriNetX	●	●	▲	■
OPTUM	■	●	▲	■
OHDSI	●	■	▲	▲
Sentinel	●	●	●	▲

- = capability
- ▲ = limited capability
- = lacks capability

Work with PCORnet®



The screenshot shows the PCORnet website interface. At the top right, the navigation bar includes 'Newsroom' and 'Contact the Front Door', with the latter highlighted by an orange circle. Below the navigation bar is the PCORnet logo and a menu with links for 'ABOUT', 'PARTNERS', 'RESEARCH', 'DATA', 'ENGAGEMENT', and 'RESOURCES'. The main heading reads 'PCORnet® Front Door'. A blue banner below the heading features a door icon and the text: 'How do you access PCORnet? PCORnet is a national resource available to everyone.' The main content area contains a paragraph: 'The PCORnet® Front Door is an access point for potential investigators, patient groups, healthcare organizations, clinicians and clinician groups, government, industry scientists, sponsors, and all stakeholders seeking to leverage PCORnet infrastructure and collaborate on patient-centered research.' Below this text is a button labeled 'CONTACT THE PCORNET® FRONT DOOR'. To the right, there is a video player with the title 'Knock on the PCORnet® Front Door to access PCORnet' and a video thumbnail showing a hand knocking on a door.

The PCORnet® Front Door

The access point for PCORnet resources and services

A “knock” on the PCORnet® Front Door can support:



STUDY DESIGN

Preliminary data for proposals, effect sizes, and potential study power



DATA NETWORK REQUEST

- Get data insights from PCORnet® Clinical Research Networks
- Obtain aggregated results for informing research project development



CONNECTIONS TO NETWORK COLLABORATORS

- Partners to co-design research
- People with specific expertise



PCORnet® STUDY SUPPORT

Deeper partnership with PCORnet provides access to best practice sharing, patient engagement, and transparent quality improvement initiatives



[Learn More About the Front Door](#)

The Strength of PCORnet®



pcornet®

The National Patient-Centered Clinical Research Network

PREVENTABLE

Pragmatic Evaluation of Events and Benefits of Lipid-Lowering in Older Adults

The Question

Can taking a commonly used heart medication prevent dementia in adults over the age of 75?

Strength of PCORnet

A “one-stop shop” for capturing 3 complementary sources of data (Medicare, EHR, & surveys)



“I appreciate that PREVENTABLE is looking at a commonly prescribed drug to see if it could benefit seniors.”

Minnie Jefferson, Patient Advisor

Study Snapshot

- **Largest trial** to date in people age 75+
- Over **10,000 enrolled** so far, with a goal to include **up to 20,000**
- **Pragmatic design** uses existing Medicare and EHR data, plus data from phone surveys. Study drugs are shipped directly to patients.

PREVENTABLE

Pragmatic Evaluation of Events and Benefits of Lipid-Lowering in Older Adults

IMPACT

- Because of the pragmatic trial design, only one protocol amendment was needed to respond to COVID-19.
- Embedded expertise in PCORnet fueled rapid enrollment of the largest trial in people aged 75+ to date. The study was broadly promoted via a major newspaper, AARP publications, and local senior guides.

Takeaway

PCORnet can effectively support pragmatic studies in challenging populations where there are barriers to participation.

ADAPTABLE

Aspirin Dosing: A Patient-centric Trial Assessing Benefits and Long-term Effectiveness

THE QUESTIONS

1. Which aspirin dose offers the right balance of effectiveness and minimal risk of bleeding?
2. Can PCORnet be used to find the answer using a clinical trial model wherein patients are drivers of engagement?

STRENGTH OF PCORnet

Adaptors: Nine patient partners from ADAPTABLE's clinical research networks:

- Offered study guidance
- Were embedded at every study step, from study concept to completion and dissemination

STUDY SNAPSHOT

- Pragmatic clinical trial
- **15,000 patients** living with heart disease
- Participants randomly assigned to take either 81 mg or 325 mg dose of aspirin



“I have lost three friends to heart disease; I don’t want to lose more.”

—Ken Gregorie,
Adaptor (Patient Advisor)

ADAPTABLE

Aspirin Dosing: A Patient-centric Trial Assessing Benefits and Long-term Effectiveness

IMPACT

ADAPTORS CONTRIBUTED TO 3 KEY EFFORTS

Newsletter for Enrolled Patients:

Quarterly, included study updates plus patients' personal stories
493 participants have shared their personal story to date

Study Communication:

Revised study materials to make them easier to understand for patients and coached study teams in mock calls to potential participants

Clinician Engagement:

Adaptors educated clinicians on what aspects of ADAPTABLE were engaging to them to improve participation rates

Over 15,000 patients enrolled from 40 sites over 38 months
Results published May 2021, *New England Journal of Medicine*

TAKEAWAY

The PCORnet infrastructure supports patient partner engagement that can fortify your study's efforts and contribute to faster enrollment and improved retention.

Blood Pressure Control Laboratory

A Reusable Platform for Efficient Surveillance and Comparative Effectiveness Research

THE QUESTION

Can PCORnet support a reusable platform to reduce patient/investigator burden and streamline evidence generation around new programs or technologies designed to help improve blood pressure control?

STRENGTH OF PCORnet

- Broad reach into a large percentage of the U.S. population
- Established connections across major health systems
- PCORnet® Common Data Model to standardize disparate electronic health record (EHR) data codes

STUDY SNAPSHOT

Platform supported three demonstration studies:

- **BP Track**, a national surveillance project
- **BP MAP**, a cluster-randomized controlled trial
- **BP Home**, an individual patient-randomized trial

Blood Pressure Control Laboratory

Comparing Ways for Patients, Doctors, and Clinics to Improve Blood Pressure Control

IMPACT

- Pragmatic design allowed for direct patient engagement and collection of patient-generated health data (Eureka)
- Assessed EHR data from 25 health systems participating in PCORnet
- Development of the novel platform was featured in *Circulation: Cardiovascular and Quality Outcomes*
- Results from BP Track published in the *Journal of the American Heart Association*
- Results from BP Home published in *JAMA Internal Medicine*

TAKEAWAY

PCORnet can be used to accelerate evidence generation and translation of innovative healthcare delivery solutions into major population health benefits.

PCORnet Resources

- Materials developed using PCORnet are shared to promote lessons learned and best practices in the Knowledge Repository located in the Resources section of [PCORnet.org](https://www.pcornet.org).
- Resources are sorted by Research, Data, and Engagement and searchable by keyword. They include **engagement case studies**, **lay audience glossaries**, the **PCORnet® Common Data Model**, and more.



Research

Explore innovative tools and models that can be used throughout every stage of your research project — from generation of a hypothesis to disseminating results.



Data

Improve the quantity and quality of data used in your study with innovative resources and tools.



Engagement

Search best practices for engaging a variety of stakeholders throughout the research process. Engagement means active involvement of all stakeholders.

Connect with PCORnet



LEARN MORE ABOUT
the PCORnet® Front Door

SUBSCRIBE
to the PCORnet newsletter

FOLLOW
PCORnetwork on LinkedIn
@PCORnetwork on X

Appendix



pcornet[®]

The National Patient-Centered Clinical Research Network

How Are Data Linked While Being Kept Secure?

Common Data Linkage

- Through strategic collaboration, PCORnet® Network Partners worked to establish a **secure** and **standardized** privacy-preserving record linkage (PPRL) infrastructure that is **reusable** and **scalable**
- Each PCORnet network site uses software that converts data into **de-identified tokens** that can be securely shared with the Coordinating Center for PCORnet®
- The tokens are included in a table that is associated with the PCORnet® Common Data Model
- From there, the Coordinating Center uses a **matching software** to determine whether a patient's data exists at more than one site (duplicative data)

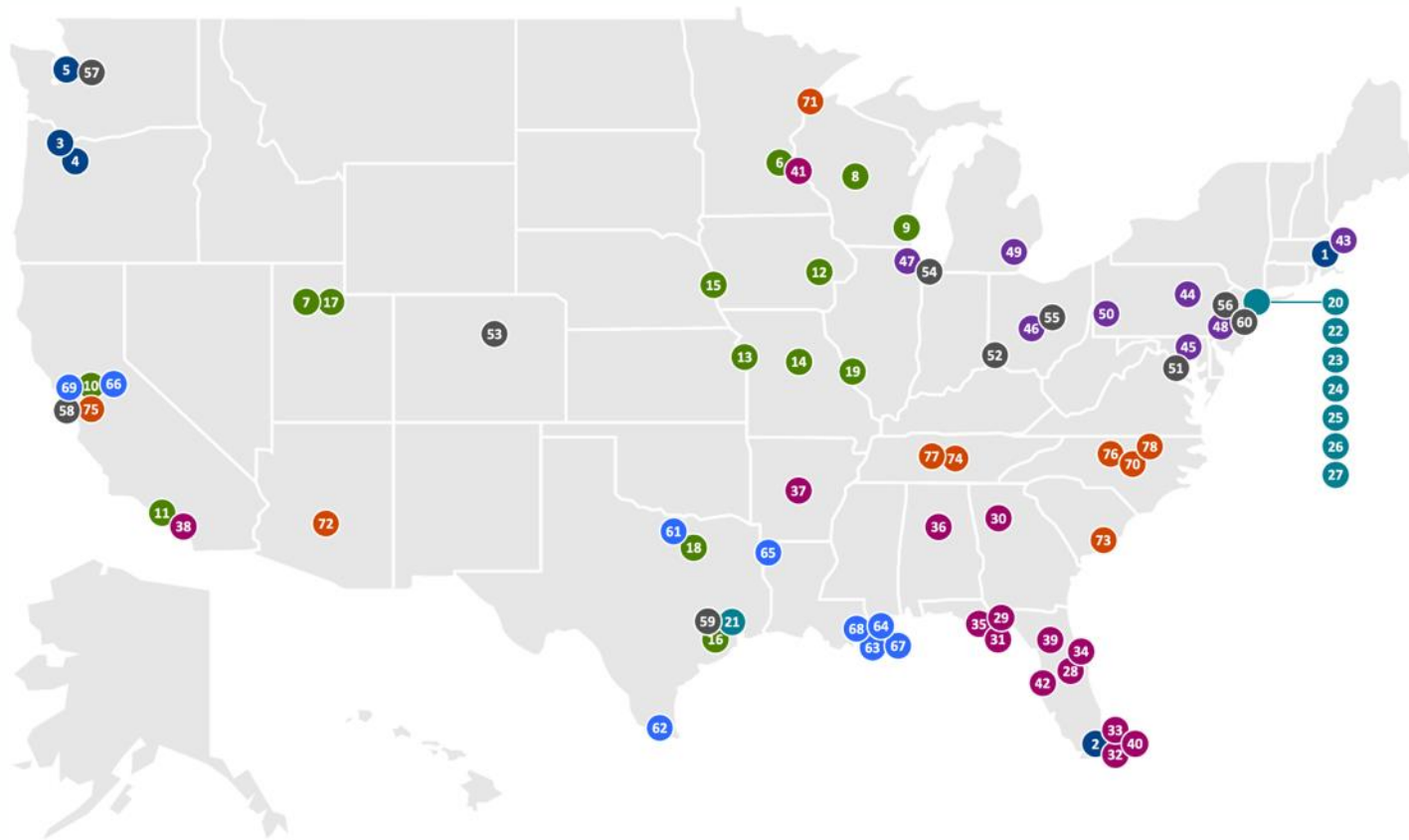


What Types of Data Have PCORnet® Network Partners Linked Using PPRL?



- Claims data
- Data included in health registries
- Data that has been duplicated across healthcare systems

PCORnet[®] Clinical Research Network Locations



ADVANCE

1. Fenway Health
2. Health Choice Network
3. OCHIN
4. Oregon Health & Science University Hospital System
5. The University of Washington

GPC

6. Allina Health
7. Inter mountain Healthcare
8. Marshfield Clinic Research Institute
9. Medical College of Wisconsin
10. University of California, Davis
11. University of California, Los Angeles
12. University of Iowa Healthcare
13. University of Kansas Hospital
14. University of Missouri
15. University of Nebraska Medical Center
16. University of Texas Health Science Center at Houston
17. University of Utah Health
18. UT Southwestern Medical Center
19. Washington University in St. Louis

INSIGHT

20. Columbia University Irving Medical Center
21. Houston Methodist
22. Montefiore Einstein
23. Mount Sinai Health System
24. New York University Langone Health
25. New York-Presbyterian
26. Stony Brook Medicine
27. Weill Cornell Medicine

OneFlorida+

28. AdventHealth Orlando
29. Bond Community Health Center, Inc.
30. Emory University
31. Florida Medicaid
32. Jackson Health System
33. Nicklaus Children's Hospital (NCH)
34. Orlando Health
35. Tallahassee Memorial Healthcare and Capital Health Plan
36. University of Alabama at Birmingham
37. University of Arkansas for Medical Sciences
38. University of California, Irvine
39. University of Florida and University of Florida Health
40. University of Miami and UHealth
41. University of Minnesota
42. University of South Florida and Tampa General Hospital

PaTH

43. Boston Medical Center
44. Geisinger
45. Johns Hopkins University
46. Ohio State University
47. Rush University Medical Center
48. Temple University
49. University of Michigan
50. University of Pittsburgh

PEDSnet

51. Children's National Hospital
52. Cincinnati Children's Hospital
53. Colorado Children's Hospital
54. Lurie Children's Hospital
55. Nationwide Children's Hospital
56. Nemours Children's Health
57. Seattle Children's Research Institute
58. Stanford Children's Health
59. Texas Children's Hospital
60. The Children's Hospital of Philadelphia (CC)

REACHnet

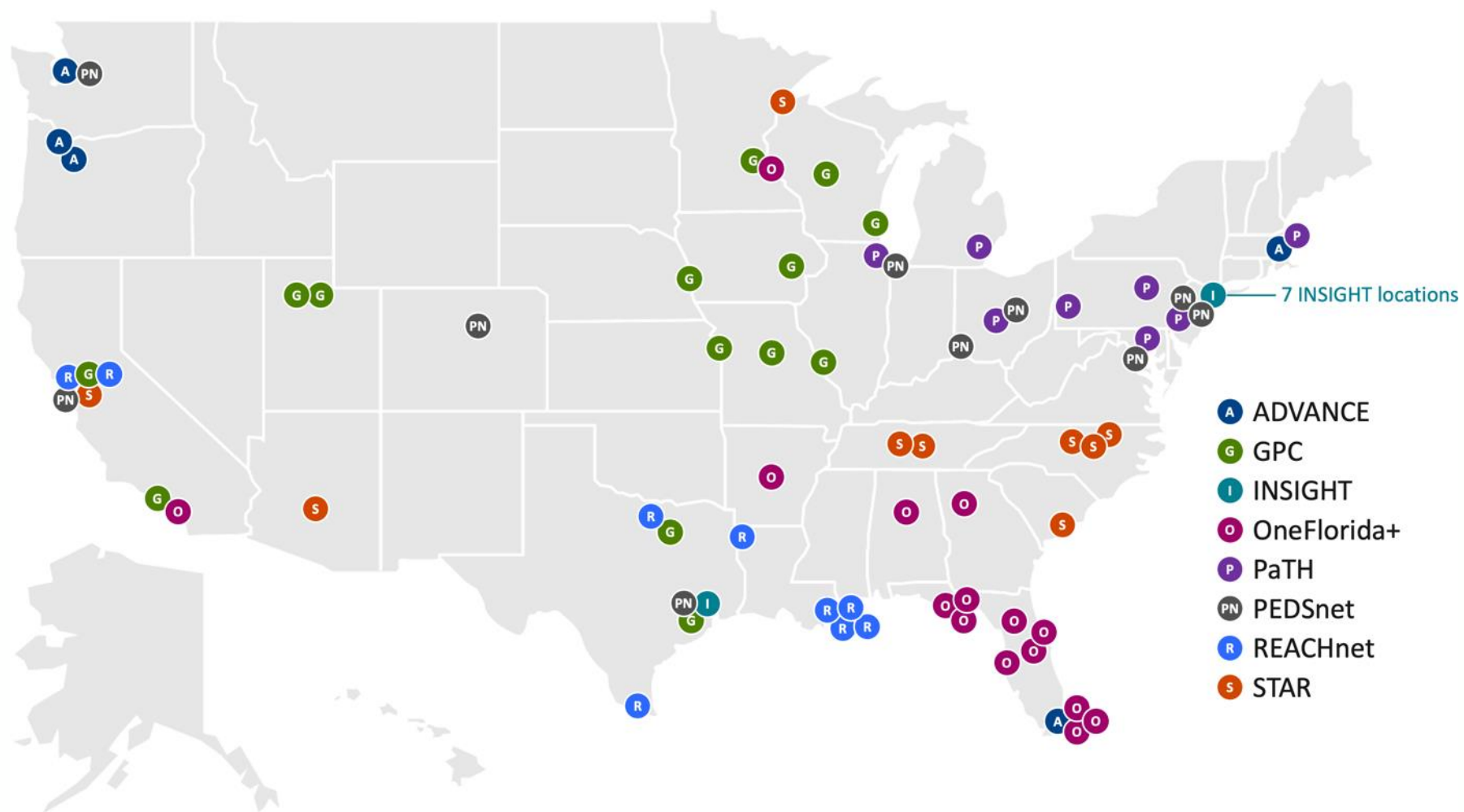
61. Baylor Scott & White Health (BSWH)
62. DHR Health Institute for Research and Development
63. Louisiana Public Health Institute
64. Ochsner Health
65. Ochsner LSU Health Shreveport
66. Sutter Health
67. Tulane Medical Center
68. LCMC Health
69. University of California, San Francisco

STAR

70. Duke University (CC)
71. Essentia Health
72. Mayo Clinic
73. Medical University of South Carolina
74. Meharry Medical College
75. Stanford University School of Medicine
76. University of North Carolina at Chapel Hill
77. Vanderbilt University Medical Center (CC)
78. Wake Forest University School of Medicine



PCORnet[®] Clinical Research Network Locations



PCORnet® Clinical Research Network Locations

ADVANCE

1. Fenway Health
2. Health Choice Network
3. OCHIN
4. Oregon Health & Science University Hospital System
5. The University of Washington

GPC

6. Allina Health
7. Intermountain Healthcare
8. Marshfield Clinic Research Institute
9. Medical College of Wisconsin
10. University of California, Davis
11. University of California, Los Angeles
12. University of Iowa Healthcare
13. University of Kansas Hospital
14. University of Missouri
15. University of Nebraska Medical Center
16. University of Texas Health Science Center at Houston
17. University of Utah Health
18. UT Southwestern Medical Center
19. Washington University in St. Louis

INSIGHT

20. Columbia University Irving Medical Center
21. Houston Methodist
22. Montefiore Einstein
23. Mount Sinai Health System
24. New York University Langone Health
25. New York-Presbyterian
26. Stony Brook Medicine
27. Weill Cornell Medicine

OneFlorida+

28. AdventHealth Orlando
29. Bond Community Health Center, Inc.
30. Emory University
31. Florida Medicaid
32. Jackson Health System
33. Nicklaus Children's Hospital (NCH)
34. Orlando Health
35. Tallahassee Memorial Healthcare and Capital Health Plan
36. University of Alabama at Birmingham
37. University of Arkansas for Medical Sciences
38. University of California, Irvine
39. University of Florida and University of Florida Health
40. University of Miami and UHealth
41. University of Minnesota
42. University of South Florida and Tampa General Hospital

PaTH

43. Boston Medical Center
44. Geisinger
45. Johns Hopkins University
46. Ohio State University
47. Rush University Medical Center
48. Temple University
49. University of Michigan
50. University of Pittsburgh

PEDSnet

51. Children's National Hospital
52. Cincinnati Children's Hospital
53. Colorado Children's Hospital
54. Lurie Children's Hospital
55. Nationwide Children's Hospital
56. Nemours Children's Health
57. Seattle Children's Research Institute
58. Stanford Children's Health
59. Texas Children's Hospital
60. The Children's Hospital of Philadelphia (CC)

REACHnet

61. Baylor Scott & White Health (BSWH)
62. DHR Health Institute for Research and Development
63. Louisiana Public Health Institute
64. Ochsner Health
65. Ochsner LSU Health Shreveport
66. Sutter Health
67. Tulane Medical Center
68. LCMC Health
69. University of California, San Francisco

STAR

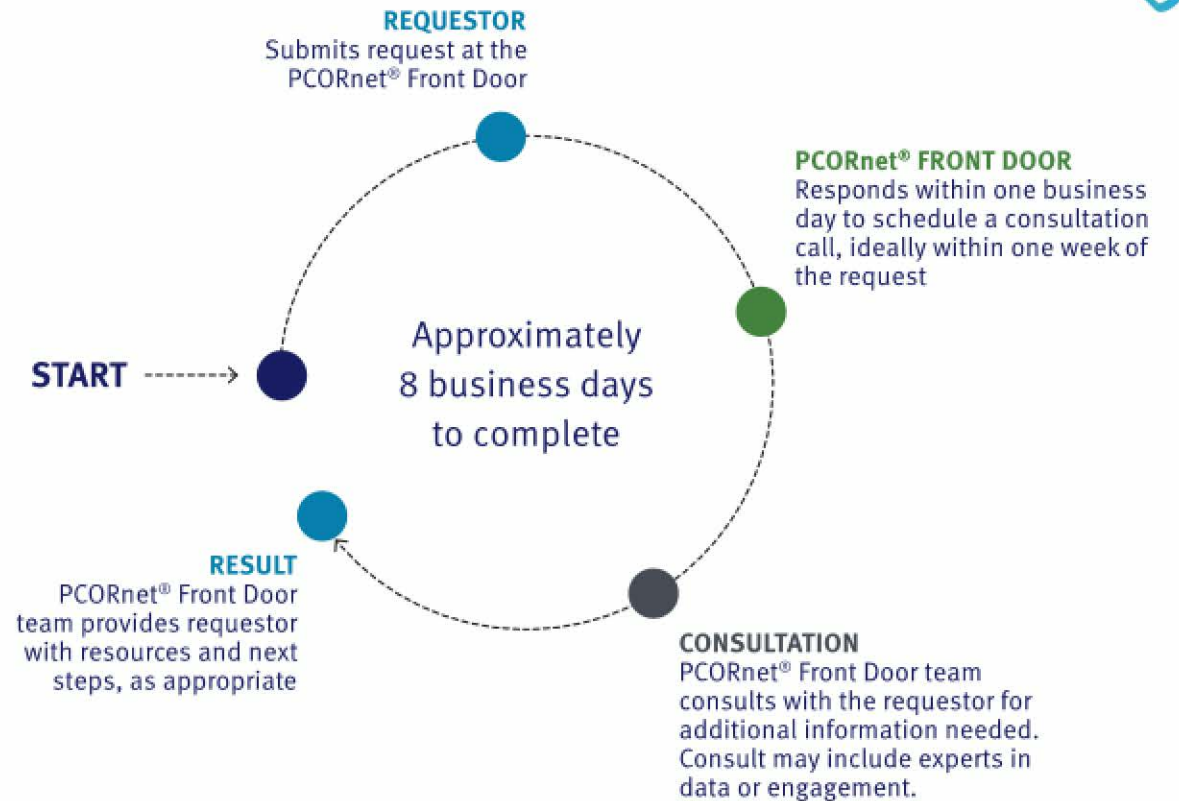
70. Duke University (CC)
71. Essentia Health
72. Mayo Clinic
73. Medical University of South Carolina
74. Meharry Medical College
75. Stanford University School of Medicine
76. University of North Carolina at Chapel Hill
77. Vanderbilt University Medical Center (CC)
78. Wake Forest University School of Medicine

The PCORnet® Front Door



Learn more at
[PCORnet.org/front-door](https://www.pcornet.org/front-door)

PCORnet® STUDY FEASIBILITY REVIEW



The PCORnet® Front Door



Learn more at
[PCORnet.org/front-door](https://www.pcornet.org/front-door)



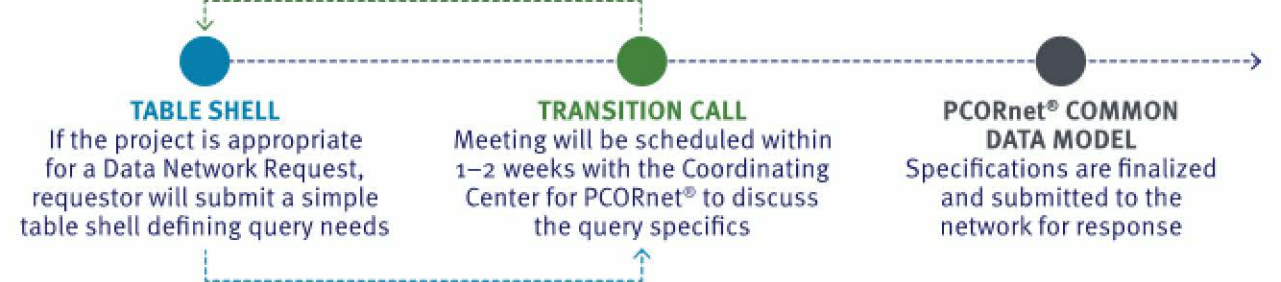
DATA NETWORK REQUEST



Initial Assessment (~8 business days)



Query Specifications (3–6 weeks)



Query Distribution, Report (~3 weeks)



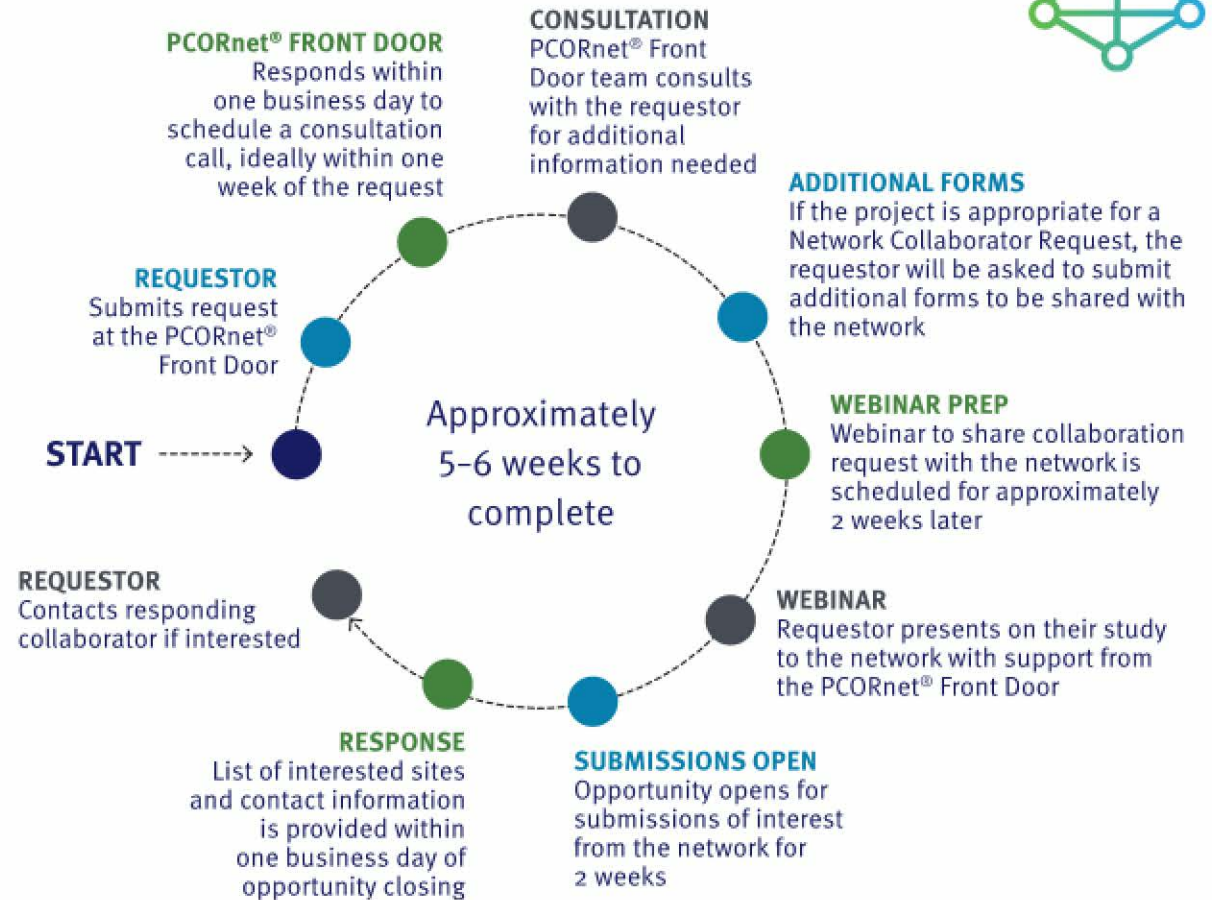
The PCORnet® Front Door



Learn more at
[PCORnet.org/front-door](https://www.pcornet.org/front-door)



NETWORK COLLABORATOR REQUEST

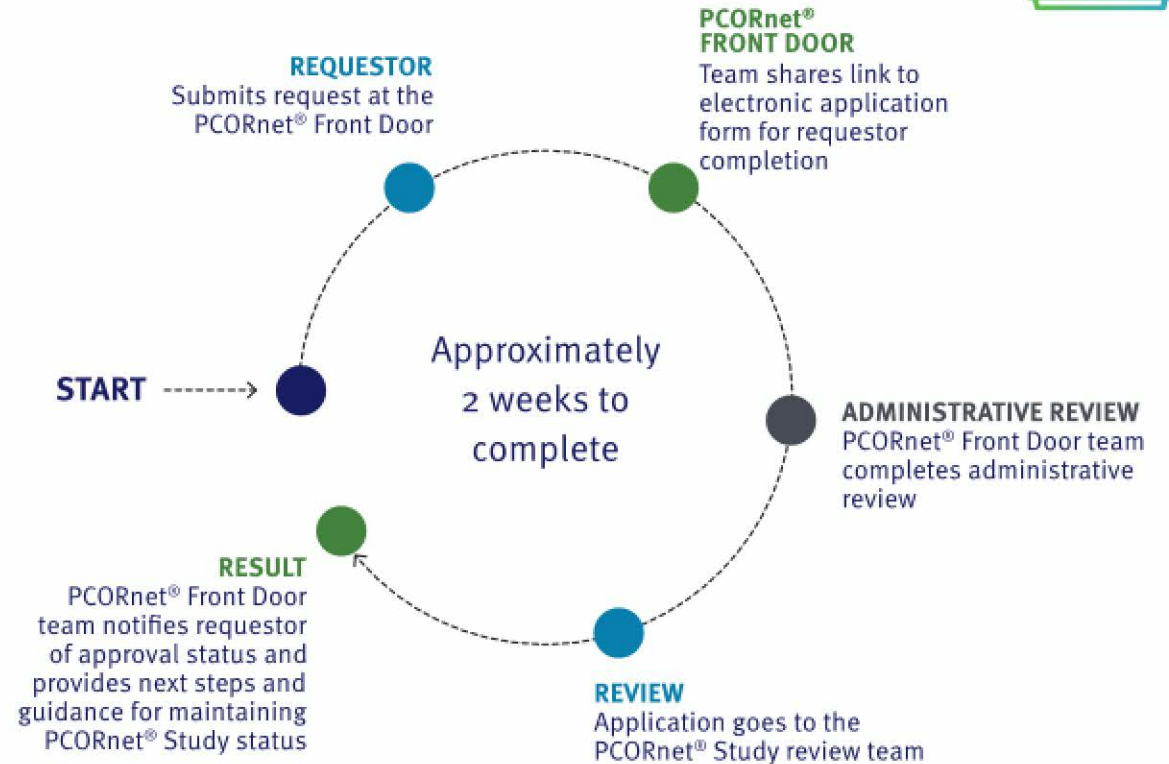


The PCORnet® Front Door



Learn more at
[PCORnet.org/front-door](https://www.pcornet.org/front-door)

PCORnet® STUDY DESIGNATION REQUEST (post-funding)



** If not approved, reviewer comments are shared with the requestor and the requestor is invited to resubmit with changes*